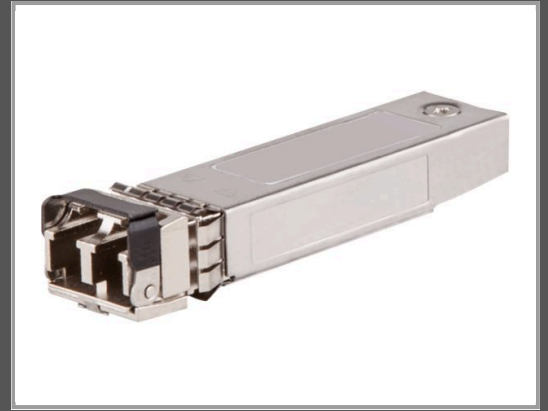


HPE Aruba - SFP (Mini-GBIC)- Transceiver-Modul

GigE - 1000Base-SX - LC Multi-Mode - bis zu 500 m - für
OfficeConnect 1820; HPE Aruba 2930F 12 - 2930F 8G - 2930M 40
- 6300 - 6405 48 - 6405 96 - 64XX

| | |
|---------------------|----------------|
| Gruppe | Netzwerkgeräte |
| Hersteller | HPE |
| Hersteller Art. Nr. | J4858D |
| EAN/UPC | 0190017245836 |



Beschreibung

HPE Aruba - SFP (Mini-GBIC)-Transceiver-Modul - GigE - 1000Base-SX - LC Multi-Mode - bis zu 500 m - für
OfficeConnect 1820; HPE Aruba 2930F 12, 2930F 8G, 2930M 40, 6300, 6405 48, 6405 96, 64XX

Hauptmerkmale

| | |
|-------------------------------------|---|
| Produktbeschreibung | HPE Aruba - SFP (Mini-GBIC)-Transceiver-Modul - GigE |
| Gerätetyp | SFP (Mini-GBIC)-Transceiver-Modul - LC Multi-Mode |
| Formfaktor | Plug-in-Modul |
| Verdrahtungstyp | 1000Base-SX |
| Datenübertragungsrage | 1 Gbps |
| Data Link Protocol | GigE |
| Maximaler Übertragungsbereich | 500 m |
| Abmessungen (Breite x Tiefe x Höhe) | 1.5 cm x 5.3 cm x 1.3 cm |
| Gewicht | 20 g |
| Entwickelt für | OfficeConnect 1820; HPE Aruba 2530, 2540 24, 2540 48, 2620, 2930F 12, 2930F 24, 2930F 48, 2930F 8G, 2930M 24, 2930M 40, 2930M 48, 3810M 24, 3810M 40, 3810M 48, 5406R 16, 5406R 44, 5406R 8-port, 5406R z12, 5412R 92, 5412R z12, 54XX, 6300, 6405 48, 6405 96, 64XX, 70XX, 72XX, 83XX, 8400 8-slot |

Ausführliche Details

| | Allgemein |
|--------------------|-----------------------------------|
| Gerätetyp | SFP (Mini-GBIC)-Transceiver-Modul |
| Formfaktor | Plug-in-Modul |
| | Netzwerk |
| Anschlusstechnik | Kabelgebunden |
| Verdrahtungstyp | 1000Base-SX |
| Data Link Protocol | GigE |

| | |
|-------------------------------|--|
| Datenübertragungsrate | 1 Gbps |
| Maximaler Übertragungsbereich | 500 m |
| | Erweiterung/Konnektivität |
| Schnittstellen | 1 x Ethernet 1000Base-SX - LC multi-mode |
| | Verschiedenes |
| Kennzeichnung | OM2 |
| | Abmessungen und Gewicht |
| Breite | 1.5 cm |
| Tiefe | 5.3 cm |
| Höhe | 1.3 cm |
| Gewicht | 20 g |
| | Informationen zur Kompatibilität |
| Entwickelt für | HPE OfficeConnect 1820-24G-PoE+ (185W), 1820-48G, 1820-48G-PoE+ (370W) HPE Aruba 2930F 12G PoE+ 2G/2SFP+, 2930F 8G PoE+ 2SFP+ TAA, 2930M 24 Smart Rate POE+ 1-Slot, 2930M 24G 1-Slot, 2930M 24G POE+ 1-Slot, 2930M 40G 8 HPE Smart Rate PoE Class 6 1-slot Switch, 2930M 40G 8 HPE Smart Rate PoE+ 1-slot Switch, 2930M 48G 1-Slot, 2930M 48G POE+ 1-Slot, 3810M 24SFP+ 250W, 3810M 48G PoE+ 4SFP+ 1050W, 3810M 48G PoE+ 4SFP+ 680W, 6300F, 6300M, 6405 48SFP+ 8SFP56, 6405 96G CL4 PoE 4SFP56, 6405 Switch Bundle, 6410, 6410 Switch Bundle, 7005 (IL) FIPS/TAA-compliant Controller, 7005 (JP) Controller, 7005 (JP) FIPS/TAA Controller, 7005 (RW) FIPS/TAA-compliant Controller, 7005 (US) FIPS/TAA Controller, 7005 Cloud Service Controller, 7010 (IL) Controller, 7010 (JP) FIPS/TAA Controller, 7010 (RW) FIPS/TAA-compliant Controller, 7024 (JP) FIPS/TAA Controller, 7024 (RW) FIPS/TAA-compliant Controller, 7024 (US) Controller, 7024 (US) FIPS/TAA Controller, 7030 (JP) Controller, 7030 (JP) FIPS/TAA Controller, 7030 (RW) FIPS/TAA-compliant Controller, 7030 (US), 7030 (US) Controller, 7030 (US) FIPS/TAA Controller, 7205 (IL) FIPS/TAA-compliant Controller, 7205 (JP) Controller, 7205 (JP) FIPS/TAA Controller, 7205 (RW) FIPS/TAA-compliant Controller, 7205 (US), 7205 (US) Controller, 7205 (US) FIPS/TAA Controller, 7210 (JP) FIPS/TAA Controller, 7210 (RW) FIPS/TAA-compliant Controller, 7210 (US), 7210 (US) FIPS/TAA Controller, 7210DC (JP) Controller, 7210DC (US) Controller, 7220 (JP) Controller, 7220 (RW) FIPS/TAA-compliant Controller, 7220 (US) FIPS/TAA Controller, 7220DC (IL) Mobility Controller, 7220DC (US) Controller, 7240 (JP) FIPS/TAA Controller, 7240 (RW) FIPS/TAA-compliant Controller, 7240 (US) FIPS/TAA Controller, 7240XM (IL) FIPS Controller, 7240XM (JP) FIPS/TAA Controller, 7240XM (RW) FIPS Controller, 7240XM (US) Controller, 7240XM (US) FIPS Controller, 7240XM (US) FIPS/TAA Controller, 8320, 8325-32C, 8325-48Y8C, 8400 8-slot Chassis |

Technische Daten © 1WorldSync. Technische Änderungen und Irrtümer vorbehalten.