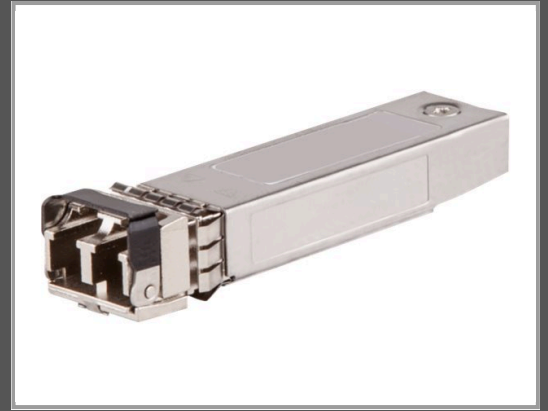


HPE Networking Instant On - SFP+- Transceiver-Modul

10GbE - 10GBase-SR - SFP+ / LC Multi-Mode - bis zu 300 m - für HPE Aruba 2930M 40 - 6200F 12 - 6200M 24 - 6300 - 6405 96 - 64XX; CX 8360; Instant On 1930 48

Gruppe	Netzwerkgeräte
Hersteller	HPE
Hersteller Art. Nr.	J9150D
EAN/UPC	0190017245935



Beschreibung

HPE Networking Instant On - SFP+-Transceiver-Modul - 10GbE - 10GBase-SR - SFP+ / LC Multi-Mode - bis zu 300 m - für HPE Aruba 2930M 40, 6200F 12, 6200M 24, 6300, 6405 96, 64XX; CX 8360; Instant On 1930 48

Hauptmerkmale

Produktbeschreibung	HPE Networking Instant On - SFP+-Transceiver-Modul - 10GbE
Gerätetyp	SFP+-Transceiver-Modul - SFP+ / LC Multi-Mode
Formfaktor	Plug-in-Modul
Verdrahtungstyp	10GBase-SR
Datenübertragungsrate	10 Gbps
Data Link Protocol	10GbE
Maximaler Übertragungsbereich	300 m
Entwickelt für	HPE Aruba 2540 24, 2540 48, 2930F 12, 2930F 48, 2930F 8G, 2930M 24, 2930M 40, 2930M 48, 3810M 24, 3810M 48, 5406R 16, 5406R 44, 5406R 8-port, 5406R z12, 5412R 92, 5412R z12, 54XX, 6200F 12, 6200M 24, 6300, 6405 48, 6405 96, 64XX, 70XX, 72XX, 83XX, 8400, 8400 8-slot; CX 8360; Instant On 1930 48

Ausführliche Details

	Allgemein
Gerätetyp	SFP+-Transceiver-Modul
Formfaktor	Plug-in-Modul
	Netzwerk
Anschlussstechnik	Kabelgebunden
Verdrahtungstyp	10GBase-SR
Data Link Protocol	10GbE
Datenübertragungsrate	10 Gbps
Maximaler Übertragungsbereich	300 m

Erweiterung/Konnektivität

Schnittstellen 1 x Ethernet 10GBase-SR - LC multi-mode

Verschiedenes

Kennzeichnung OM3

Informationen zur Kompatibilität

Entwickelt für HPE Aruba 2930F 12G PoE+ 2G/2SFP+, 2930F 8G PoE+ 2SFP+ TAA, 2930M 24 Smart Rate POE+ 1-Slot, 2930M 24G 1-Slot, 2930M 24G POE+ 1-Slot, 2930M 40G 8 HPE Smart Rate PoE Class 6 1-slot Switch, 2930M 40G 8 HPE Smart Rate PoE+ 1-slot Switch, 2930M 48G 1-Slot, 2930M 48G POE+ 1-Slot, 3810M 24SFP+ 250W, 3810M 48G PoE+ 4SFP+ 1050W, 3810M 48G PoE+ 4SFP+ 680W, 6200F 12G Class4 PoE 2G/2SFP+ 139W Switch, 6200F 12G Class4 PoE 2G/2SFP+ 139W TAA Switch, 6200M 24G Class4 PoE 4SFP+, 6300F, 6300M, 6405 48SFP+ 8SFP56, 6405 96G CL4 PoE 4SFP56, 6405 Switch Bundle, 6410, 6410 Switch Bundle, 7005 (IL) FIPS/TAA-compliant Controller, 7005 (JP) Controller, 7005 (JP) FIPS/TAA Controller, 7005 (RW) FIPS/TAA-compliant Controller, 7005 (US) FIPS/TAA Controller, 7005 Cloud Service Controller, 7010 (IL) Controller, 7010 (JP) FIPS/TAA Controller, 7010 (RW) FIPS/TAA-compliant Controller, 7024 (JP) FIPS/TAA Controller, 7024 (RW) FIPS/TAA-compliant Controller, 7024 (US) Controller, 7024 (US) FIPS/TAA Controller, 7030 (JP) FIPS/TAA Controller, 7030 (RW) FIPS/TAA-compliant Controller, 7030 (US), 7030 (US) FIPS/TAA Controller, 7205 (IL) FIPS/TAA-compliant Controller, 7205 (JP) Controller, 7205 (JP) FIPS/TAA Controller, 7205 (RW) FIPS/TAA-compliant Controller, 7205 (US), 7205 (US) Controller, 7205 (US) FIPS/TAA Controller, 7210 (JP) FIPS/TAA Controller, 7210 (RW) FIPS/TAA-compliant Controller, 7210 (US), 7210DC (JP) Controller, 7210DC (US) Controller, 7220 (JP) Controller, 7220 (RW) FIPS/TAA-compliant Controller, 7220 (US) FIPS/TAA Controller, 7220DC (IL) Mobility Controller, 7240 (RW) FIPS/TAA-compliant Controller, 7240 (US) FIPS/TAA Controller, 7240XM (IL) FIPS Controller, 7240XM (JP) FIPS/TAA Controller, 7240XM (RW) FIPS Controller, 7240XM (US) FIPS Controller, 8320, 8325-32C, 8325-48Y8C, 8400 8-slot Chassis, 8400 Management Module
HPE Aruba CX 8360-12C V2, 8360-16Y2C V2
HPE Aruba Instant On 1930 48G Class4 PoE 4SFP/SFP+ 370W Switch

Technische Daten © 1WorldSync. Technische Änderungen und Irrtümer vorbehalten.